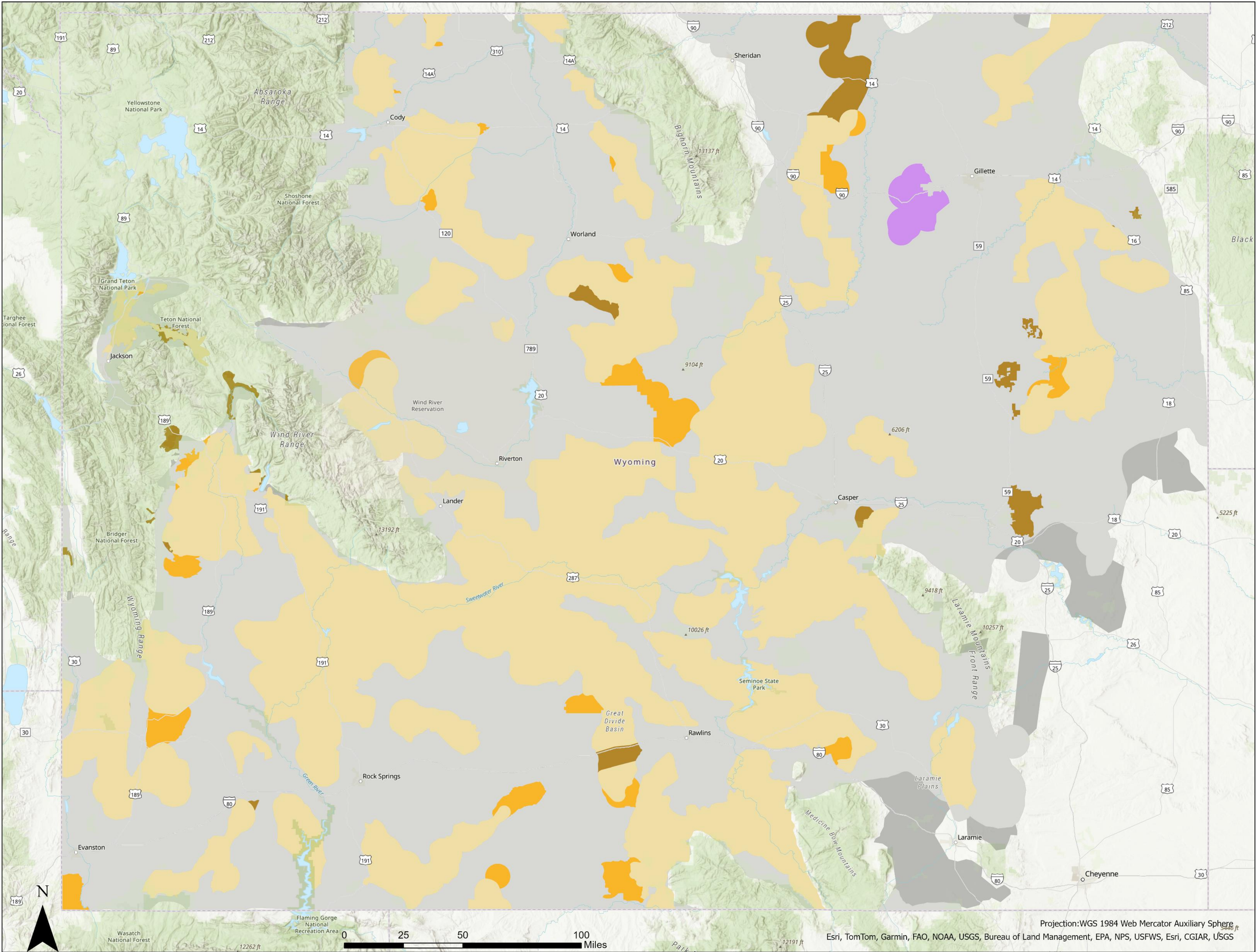


GREATER SAGE-GROUSE

Draft Resource Management Plan Amendment/Environmental Impact Statement

Wyoming HMA additions and subtraction in the preferred Alternative (Alternative 5). The changes proposed to HMAs by the BLM are the same as those proposed by the State of Wyoming (10/18/2023) as changes to Sage-grouse Core Areas and are based on new science and changes in the conditions of habitats.



Acres GRSG Habitat Management Areas by Alternative
(BLM surface only) – Table 2-3 DEIS

HMA Type	Alts 1 & 2 (Acres)	Alt 3 (Acres)	Alt 4 (Acres)	Alts 5 & 6 (Acres)*
PHMA	8,328,000	17,821,000	9,921,000	8,609,000
GHMA	9,397,000	--	7,905,000	8,891,000
SHMA (BLM Surface)	--	--	--	15,000

* Alternative 6 includes 839,000 acres of ACECs

Legend

SHMA

Alternative 5 PHMA Additions

Current GHMA

Alternative 5 PHMA Subtractions

Alternative 5 GHMA Additions

Current PHMA

